

Conflicts and difficulties in the integration of WFD and Flood Directive

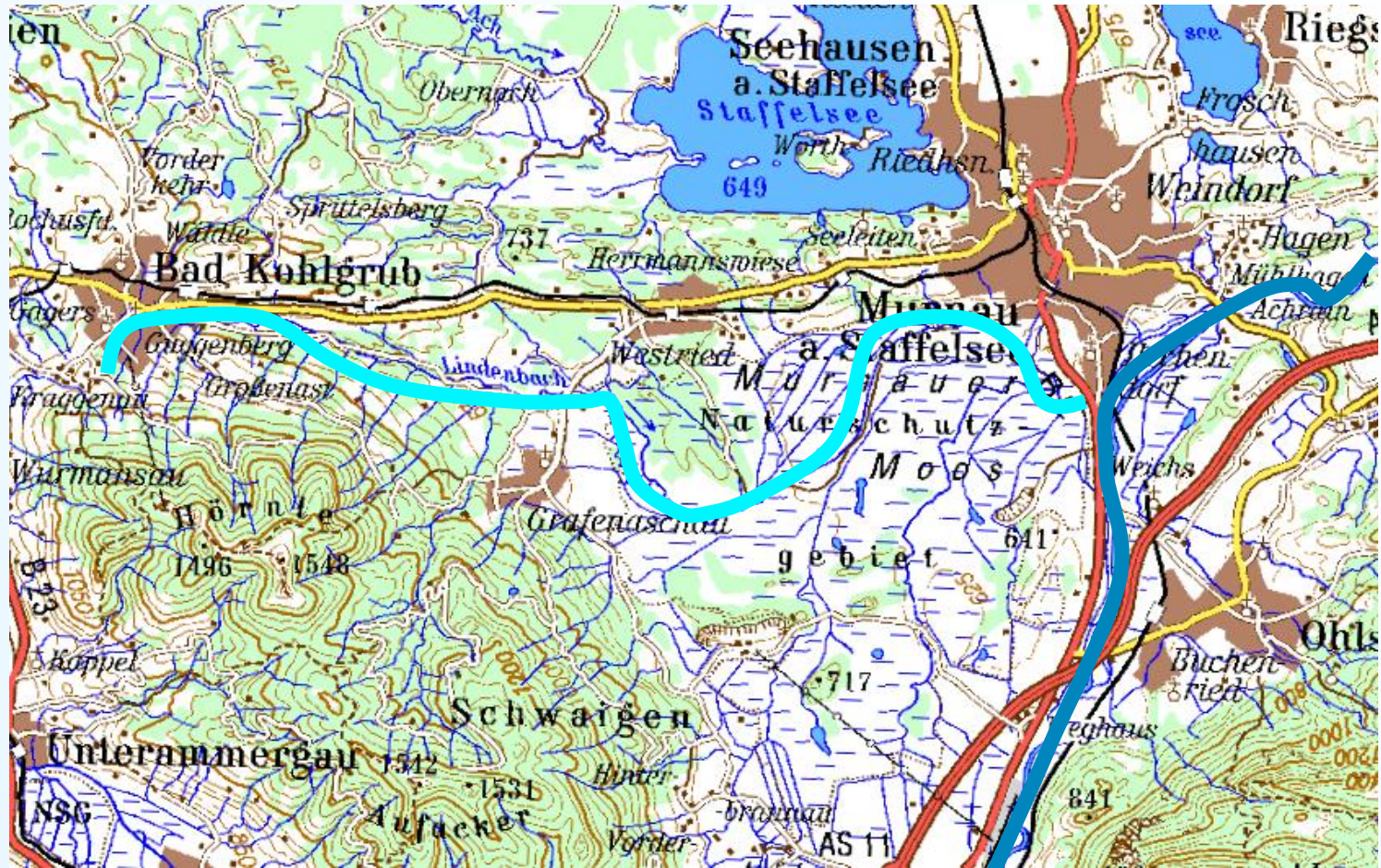
nature
vs.
protection ?

Tobias Hafner
Bavarian State Ministry of the
Environment and Public Health

Aosta, March, 19, 2013



Example: Lindenbach



flood event 2009

- > further need of flood protection
- > damage of existing protection works

Integration of WFD

- > replacement of damaged check dams by ramps
- > migration is possible again (17 km)



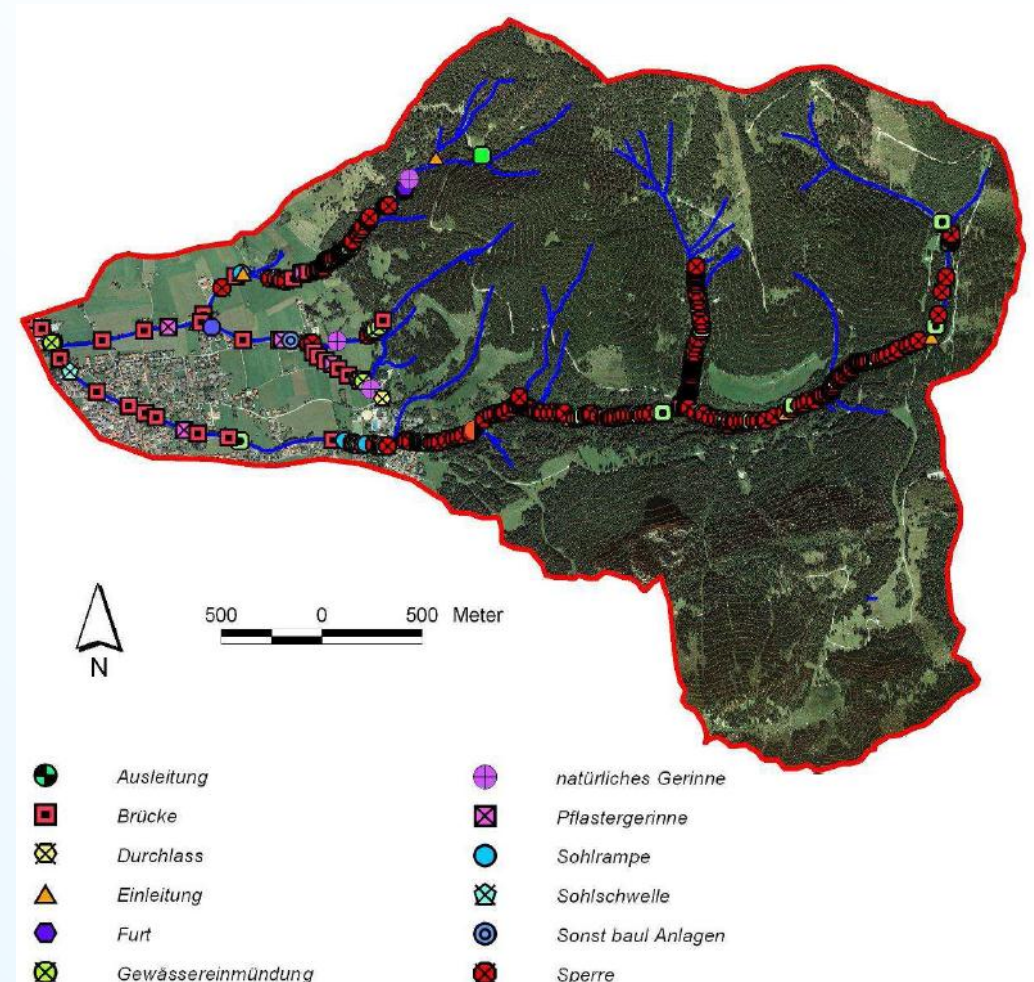
Replacement of about 19 drop structures by ramps on a stretch of 17 km



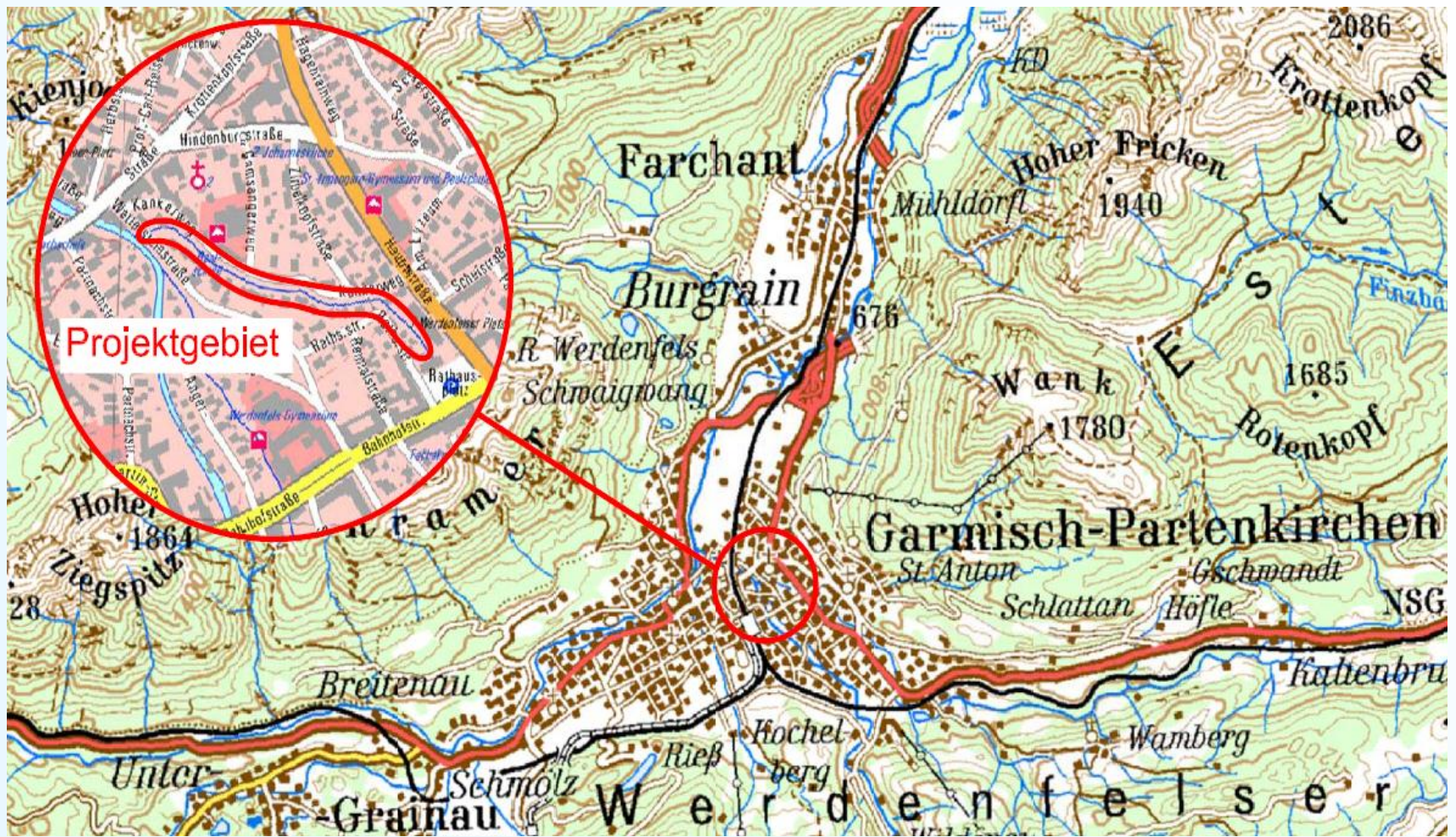
Height: 3,10m
Length: 120 m

Steep torrents ?

In Bavaria:
about 45.000 protection
structures (15.000 barrages)



Flood protection and less space in Garmisch-P.





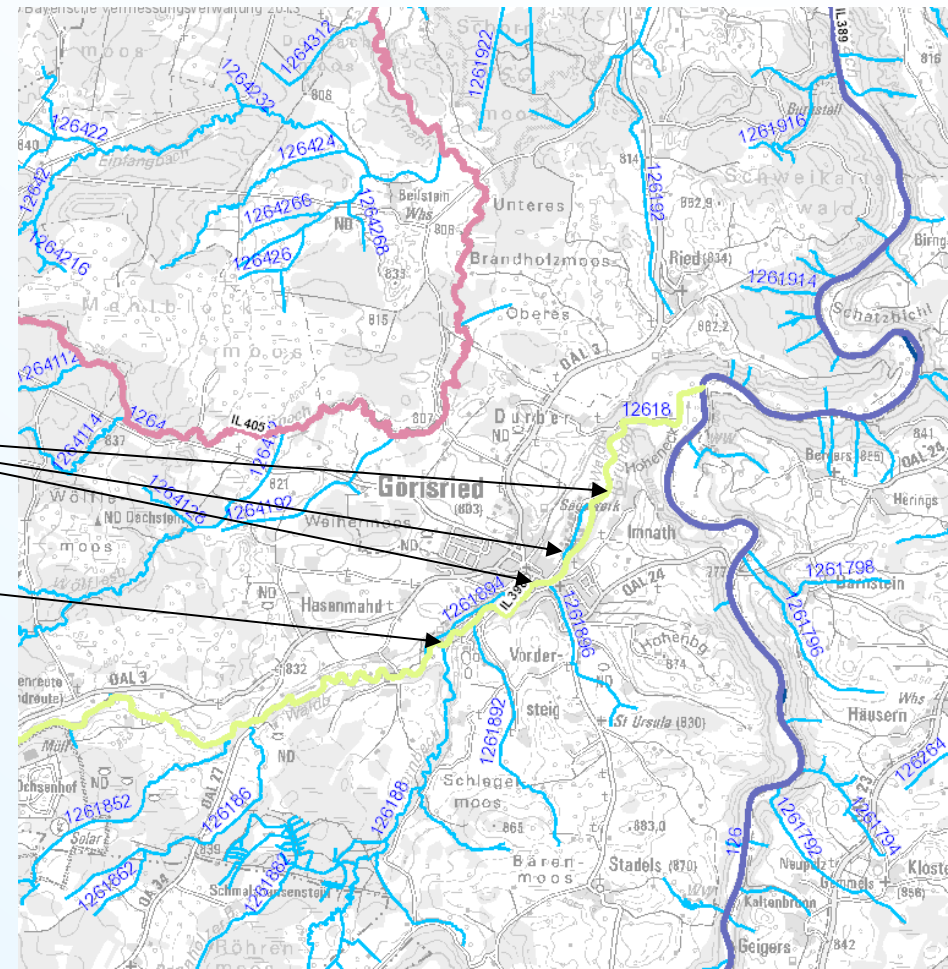
18/11/2011





A retention dam for Görisried (migration / continuity ?)

- Flood protection measure of the Municipality Görisried
- Funded by the state
- Higher subvention, if ecological benefits (WFD) are realized
- -> reconstruction of drop structures
- -> dam with migration gorge





Thank you very much
for your attention!



tobias.hafner@stmug.bayern.de