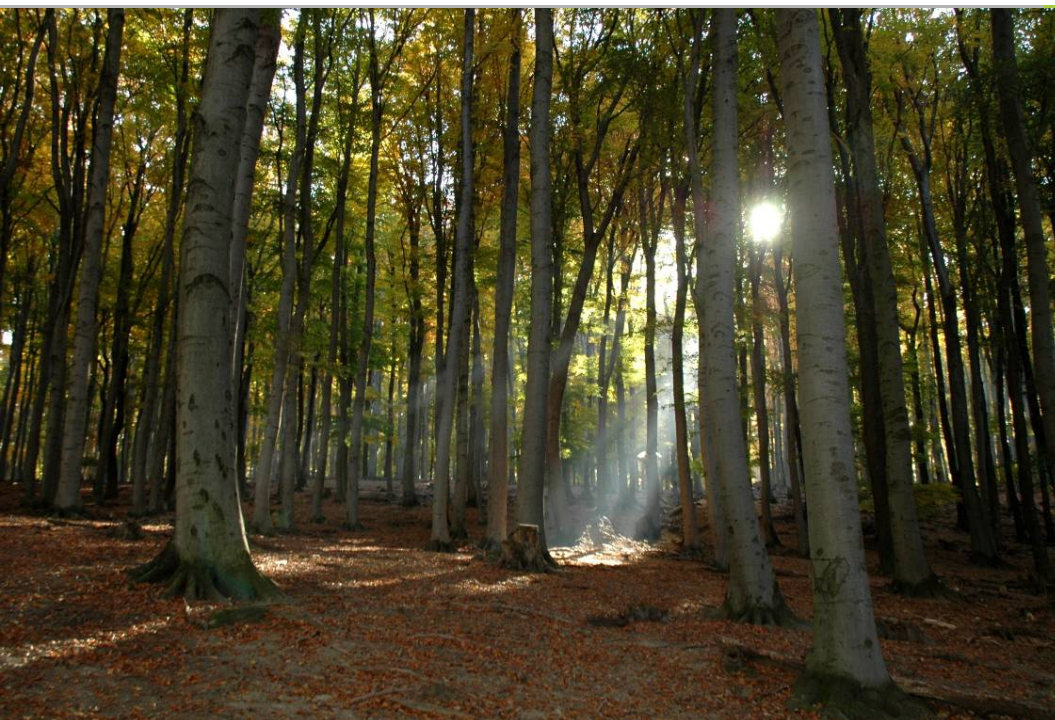


The wood chain in Austria: how participatory processes can foster green economy and promote sustainability principles

Dr. Johannes SCHIMA, Deputy Director General of the
Forestry Department, Federal Ministry of Agriculture,
Forestry, Environment and Water Management



lebensministerium.at



lebensministerium.at

lebensministerium

lebensministerium.at

lebensministerium.at

lebensministerium.at

lebensministerium.at

lebensministerium.at



Overview



lebensministerium.at

- **Austrian Forests – Facts and Figures**
- **Forest products of Austria**
- **Austrian Forest Dialog –
Forest Programme & other initiatives**



Austrian Forests



lebensministerium.at

9 federal provinces

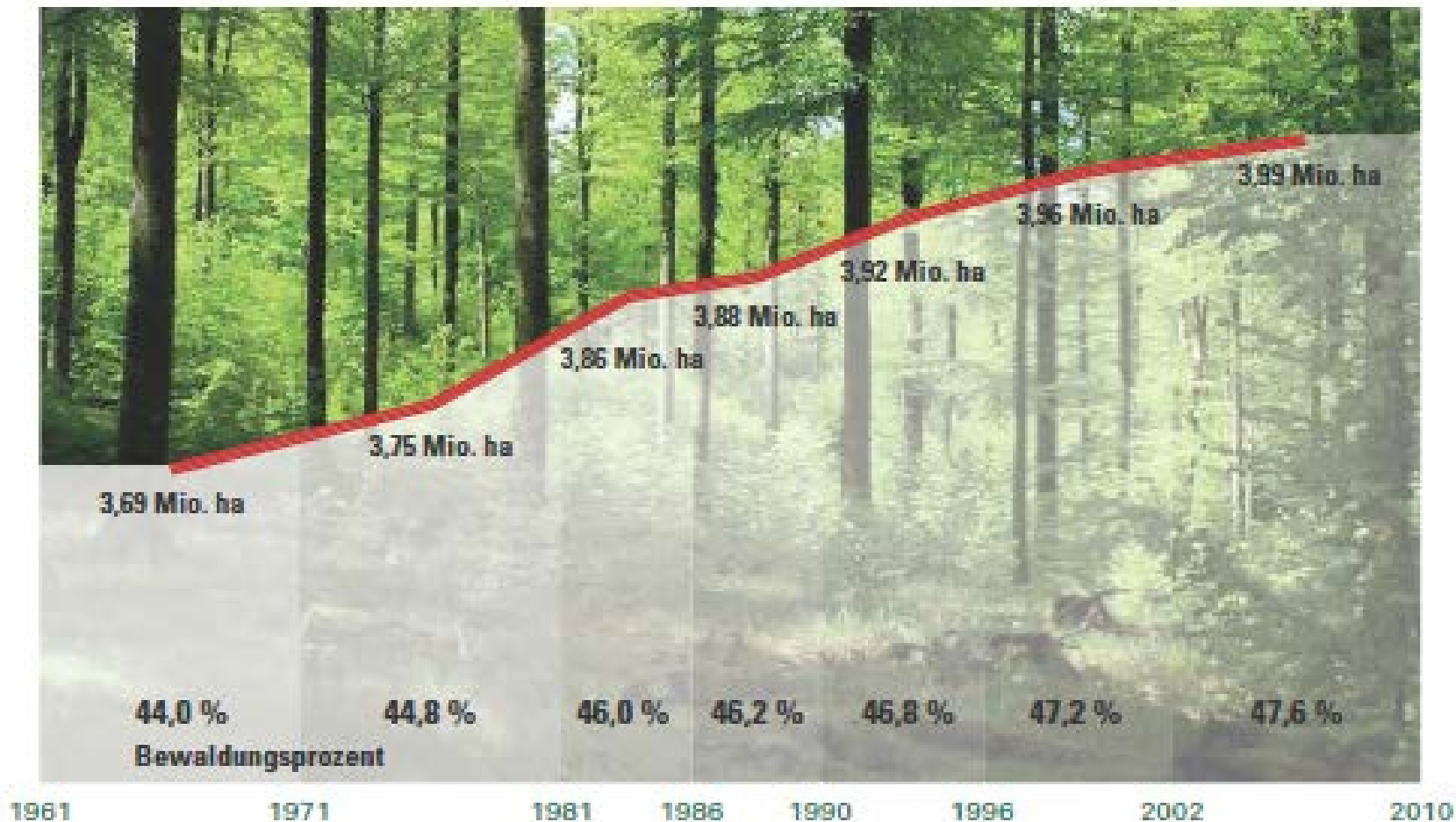
2354 communities



Forest area in Austria



lebensministerium.at

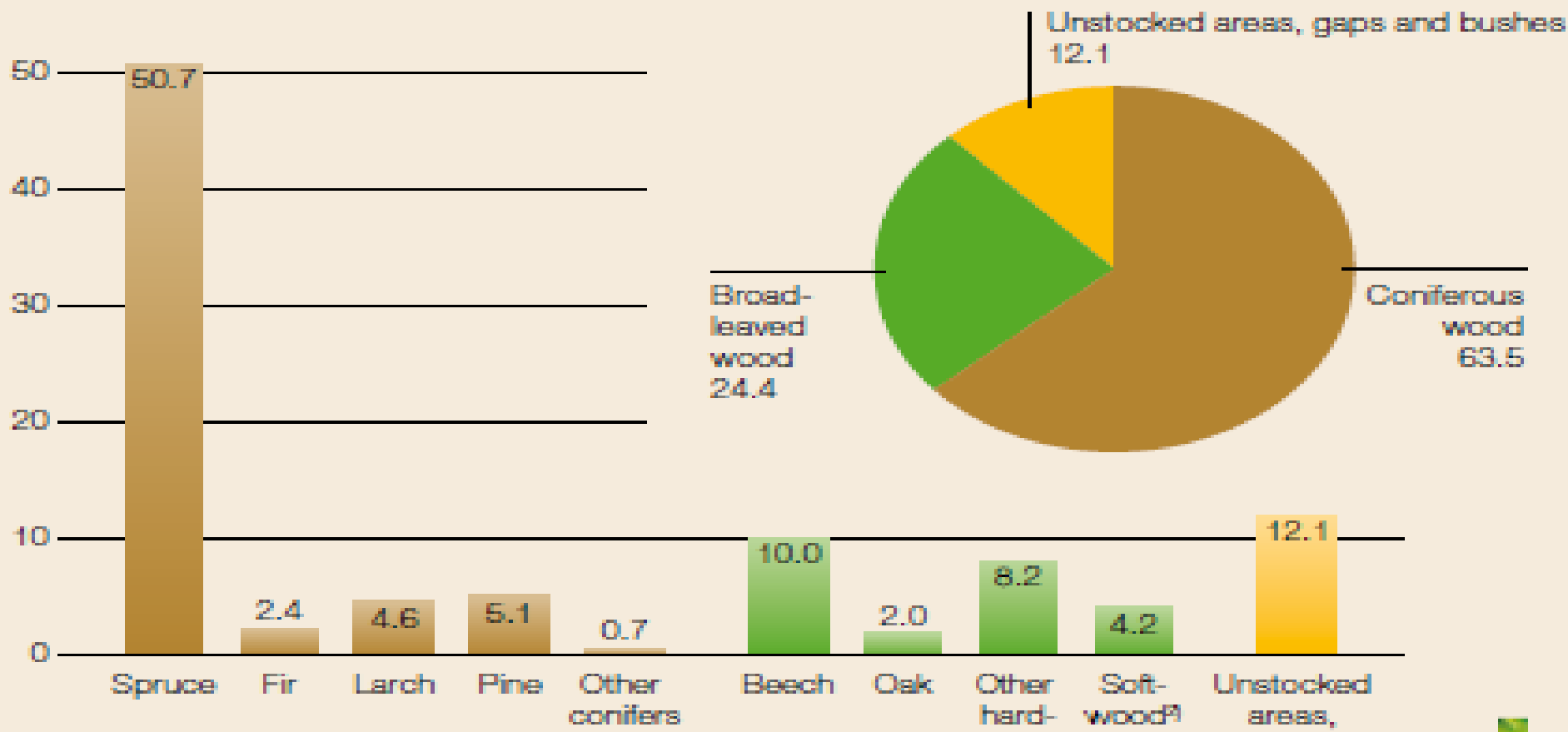


Source:
ÖWI 2007 - 2009



Distribution of tree species

in percent area



¹⁾ Common hornbeam, ash, maple, elm, Spanish chestnut, black locust, etc.

²⁾ Birch, common alder, grey alder, linden, aspen, white, grey, black and hybrid poplar, willow, etc.

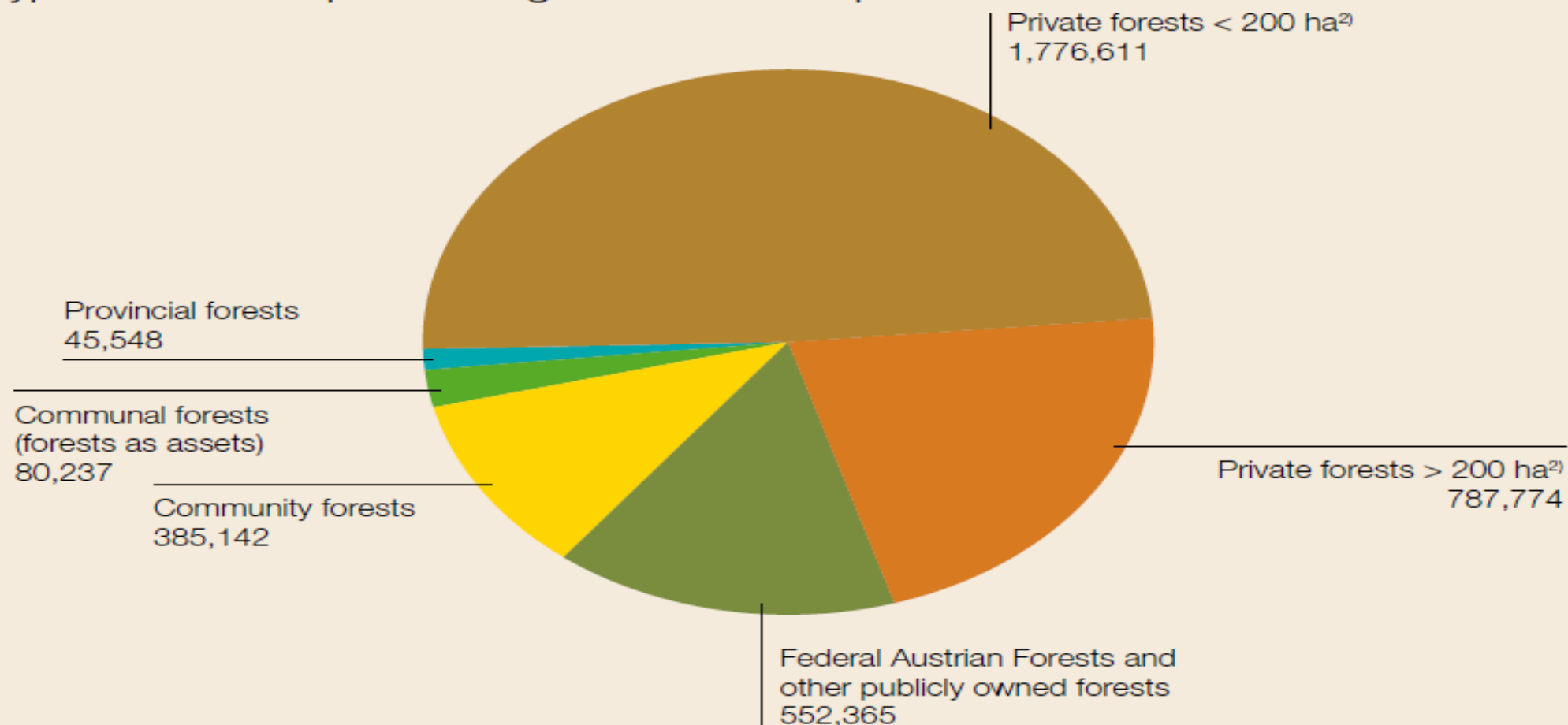


forstwissenschaft.at

Source: Federal Research and Training Centre for Forests, Natural Hazards and Landscape 2013 / Austrian Forest Inventory 2007/09

Wooded areas and ownership situations 2011

Types of ownership according to cadastral map in ha¹⁾



¹⁾ Due to different surveying methods the wooded areas identified in the cadastral map differ from those of the Agricultural Structure Survey and of the Austrian Forest Inventory.

²⁾ incl. church-owned forests

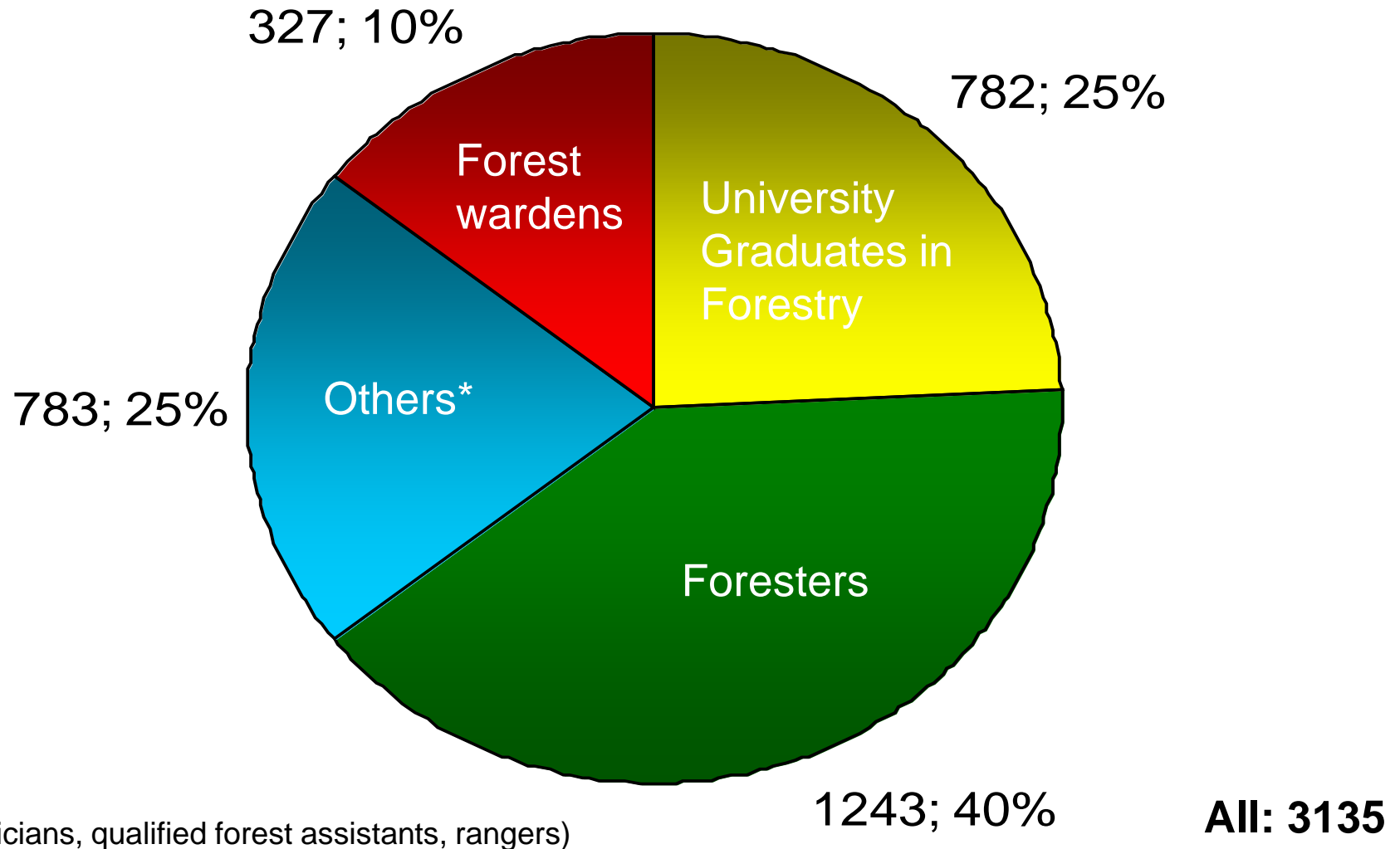
Source: Ministry of Life 2013

Forestry - Personnel

Source: BMLFUW Abt. IV/1 (year of survey: 2006)

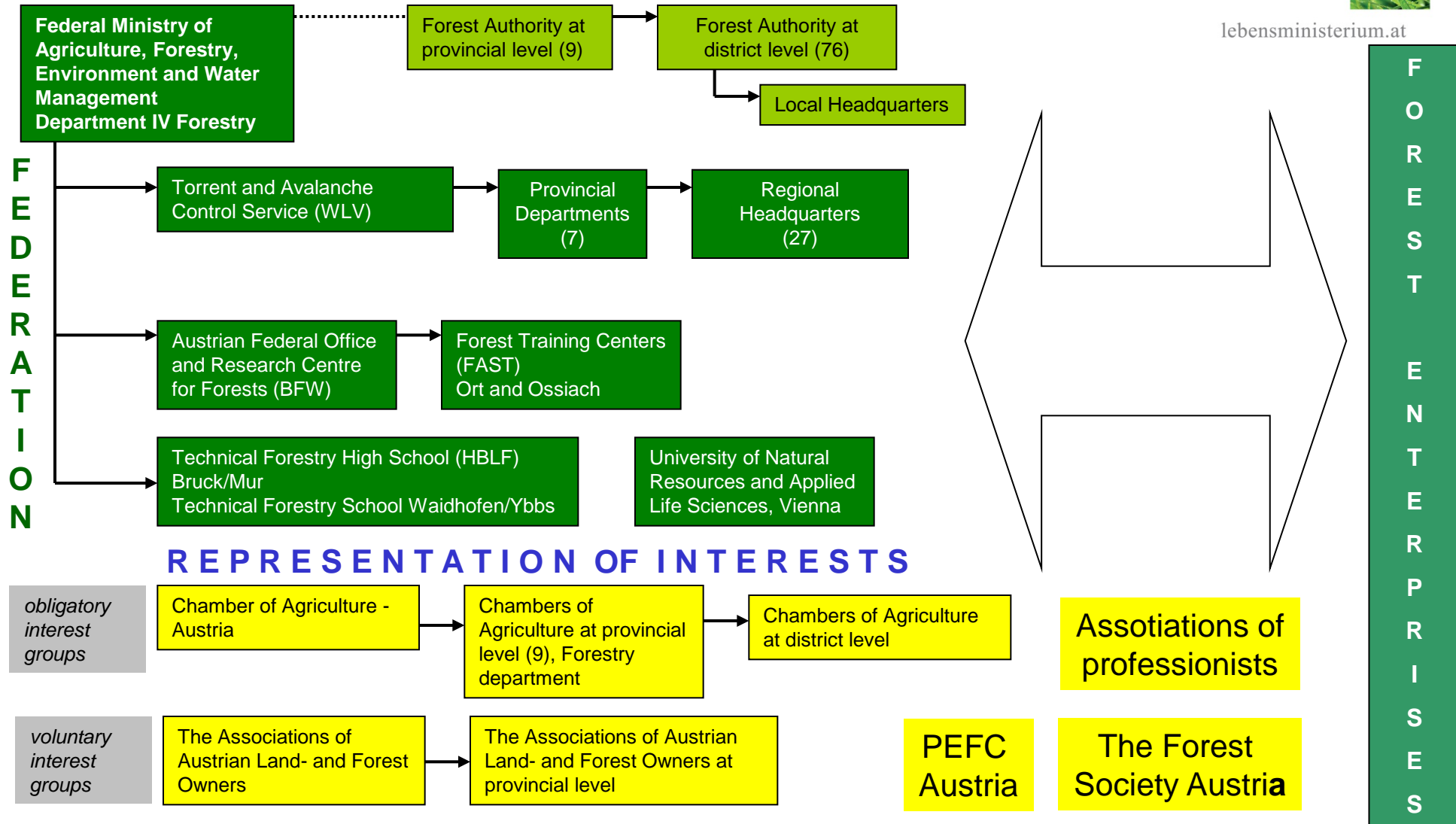


lebensministerium.at



Institutional Framework

PROVINCES

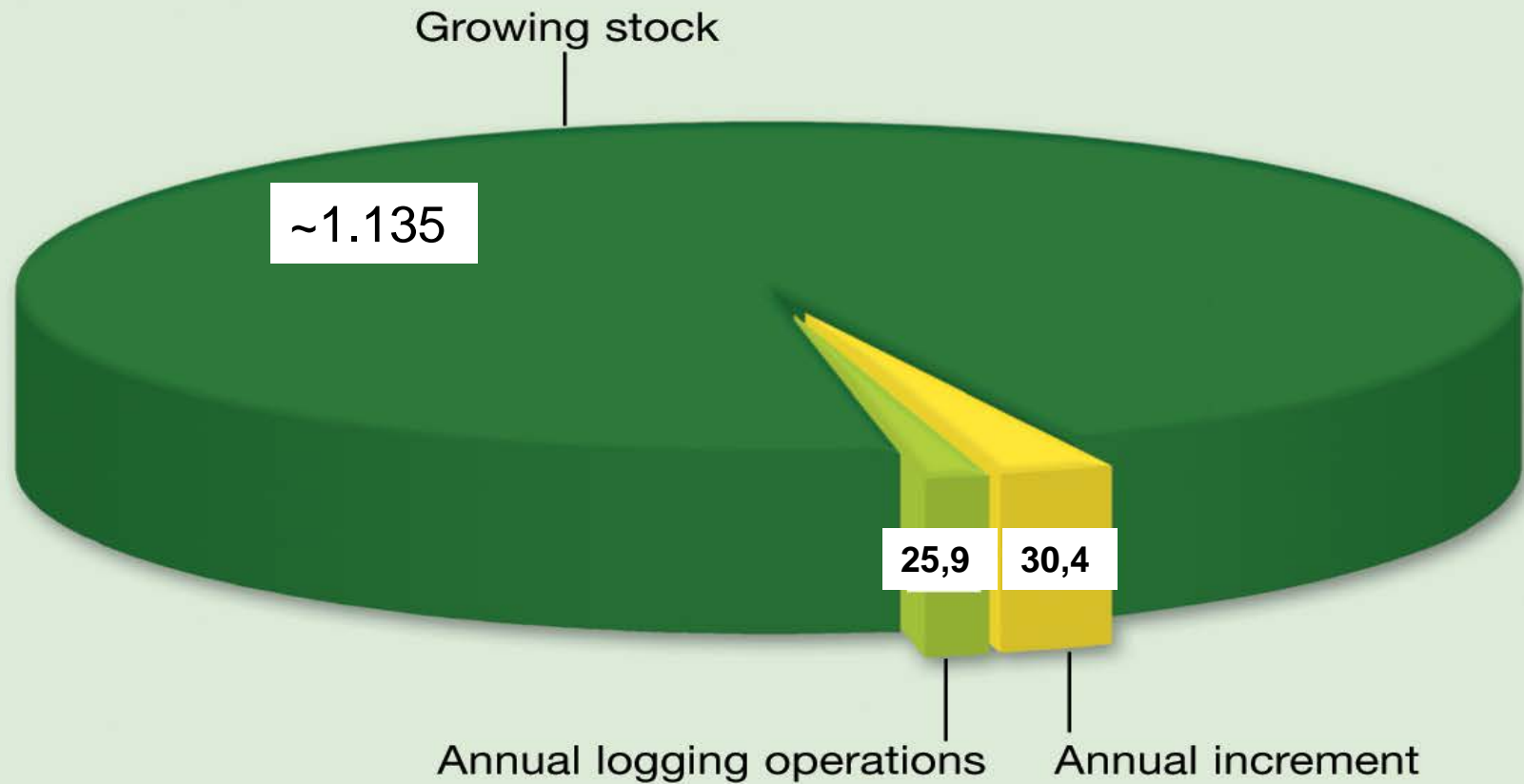


Timber in Austria



lebensministerium.at

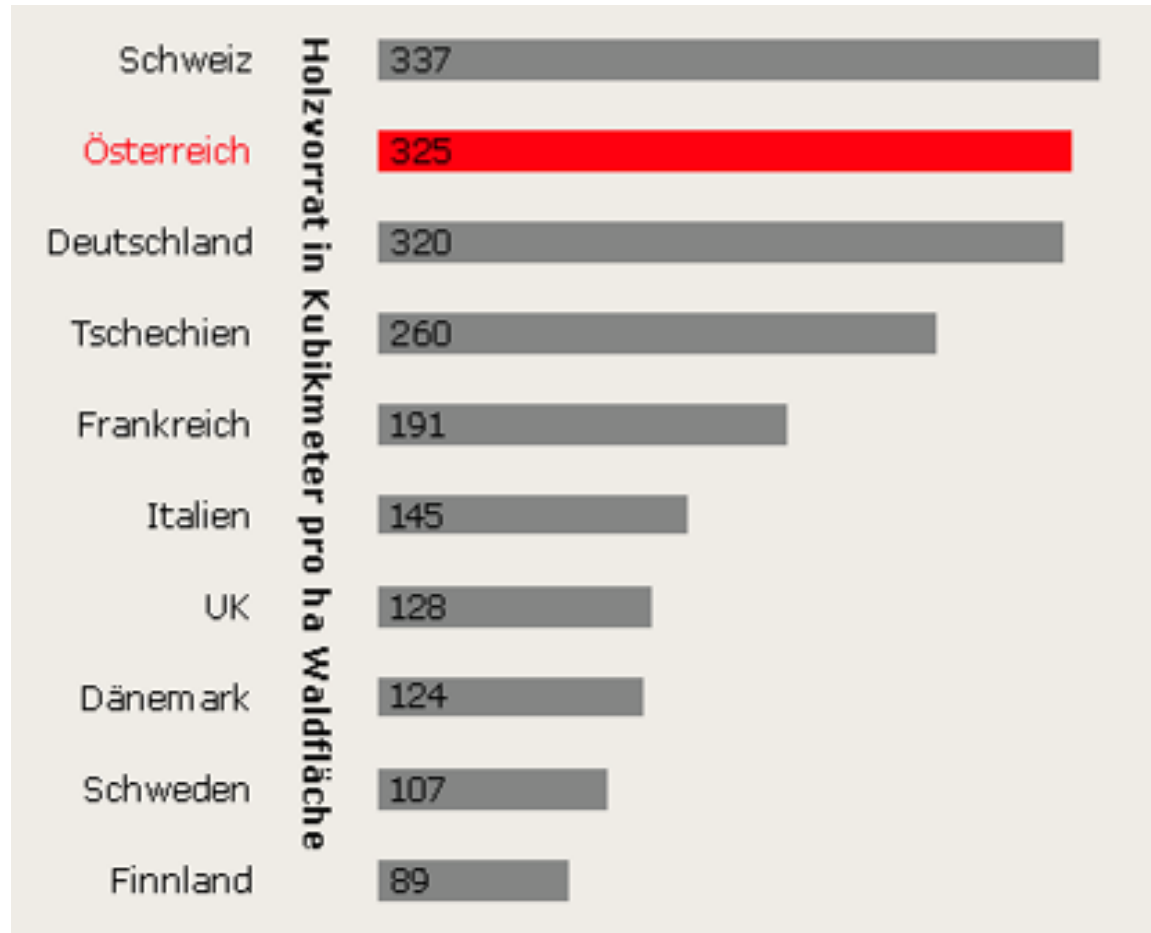
in million solid cubic metres



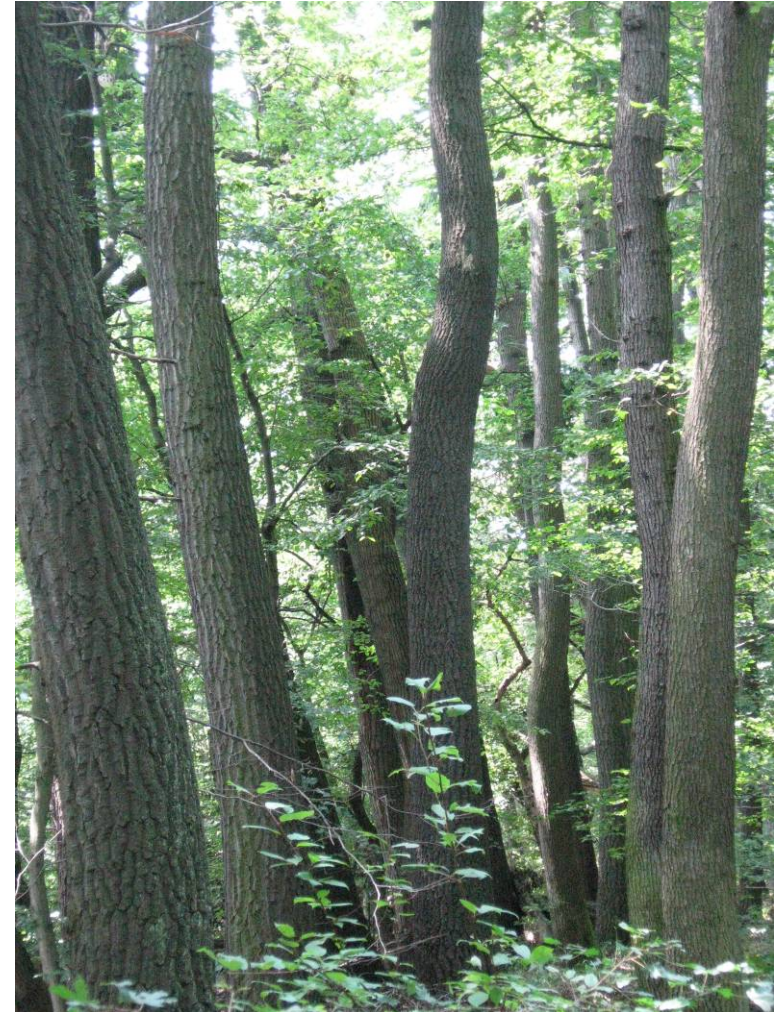
Solid m³ of standing crop per ha



lebensministerium.at



Source: Lebensministerium 2004



Enterprises & jobs



lebensministerium.at

| | Enterprises | Jobs |
|----------------------------------|-------------|--------|
| Forestry | 170.000* | 8.000 |
| Timber industry | 1.500 | 30.900 |
| Carpenters | 9.900 | 51.100 |
| Timber trading | 3.300 | 30.000 |
| Master carpenters | 1.900 | 9.800 |
| Paper & paperboard manufacturers | 27 | 8.800 |
| Paper & paperboard fabricators | 96 | 9.500 |

* Forest owners

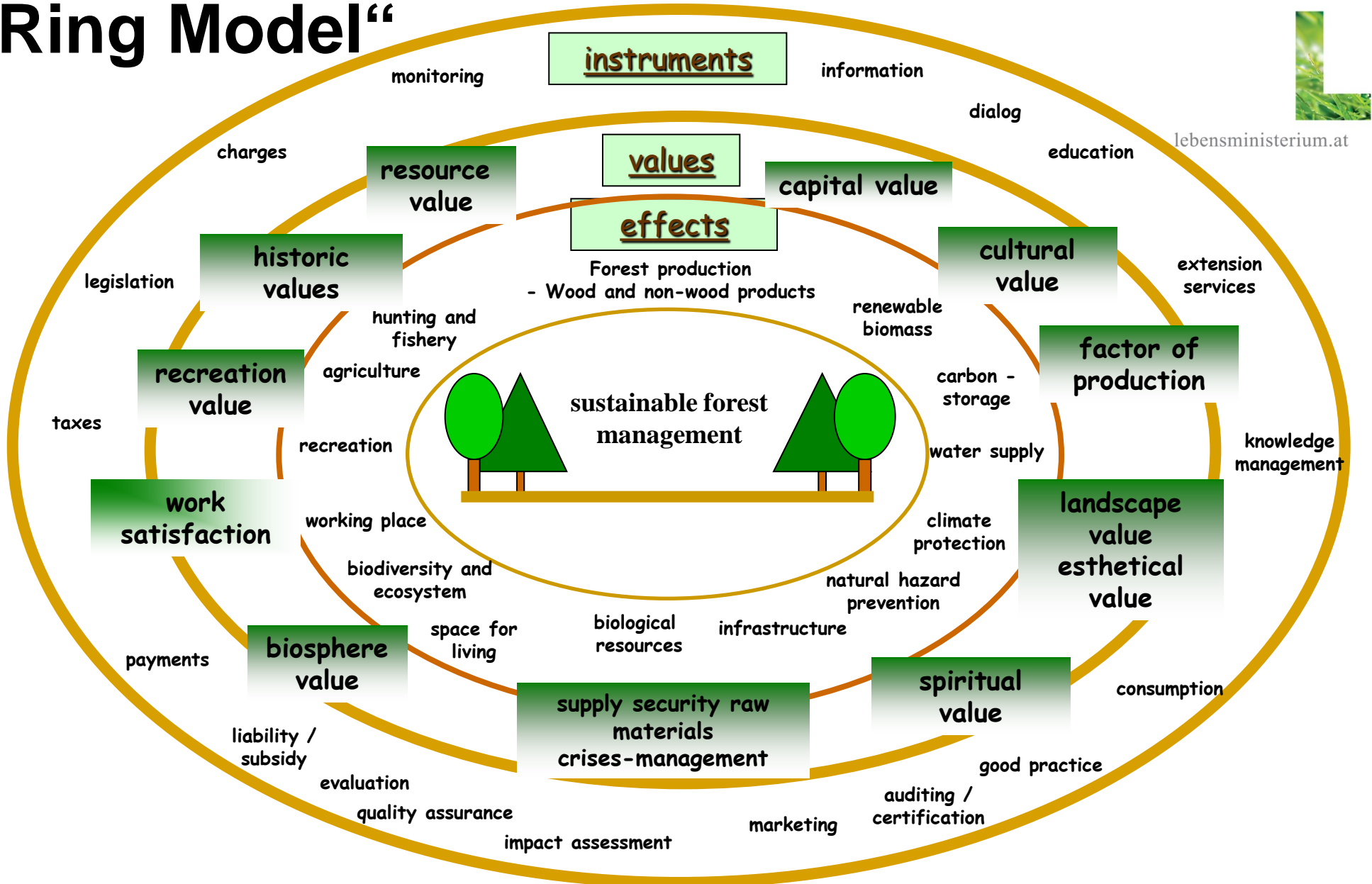
Quelle: Fachverbände, Lebensministerium, Stand 2007/2009



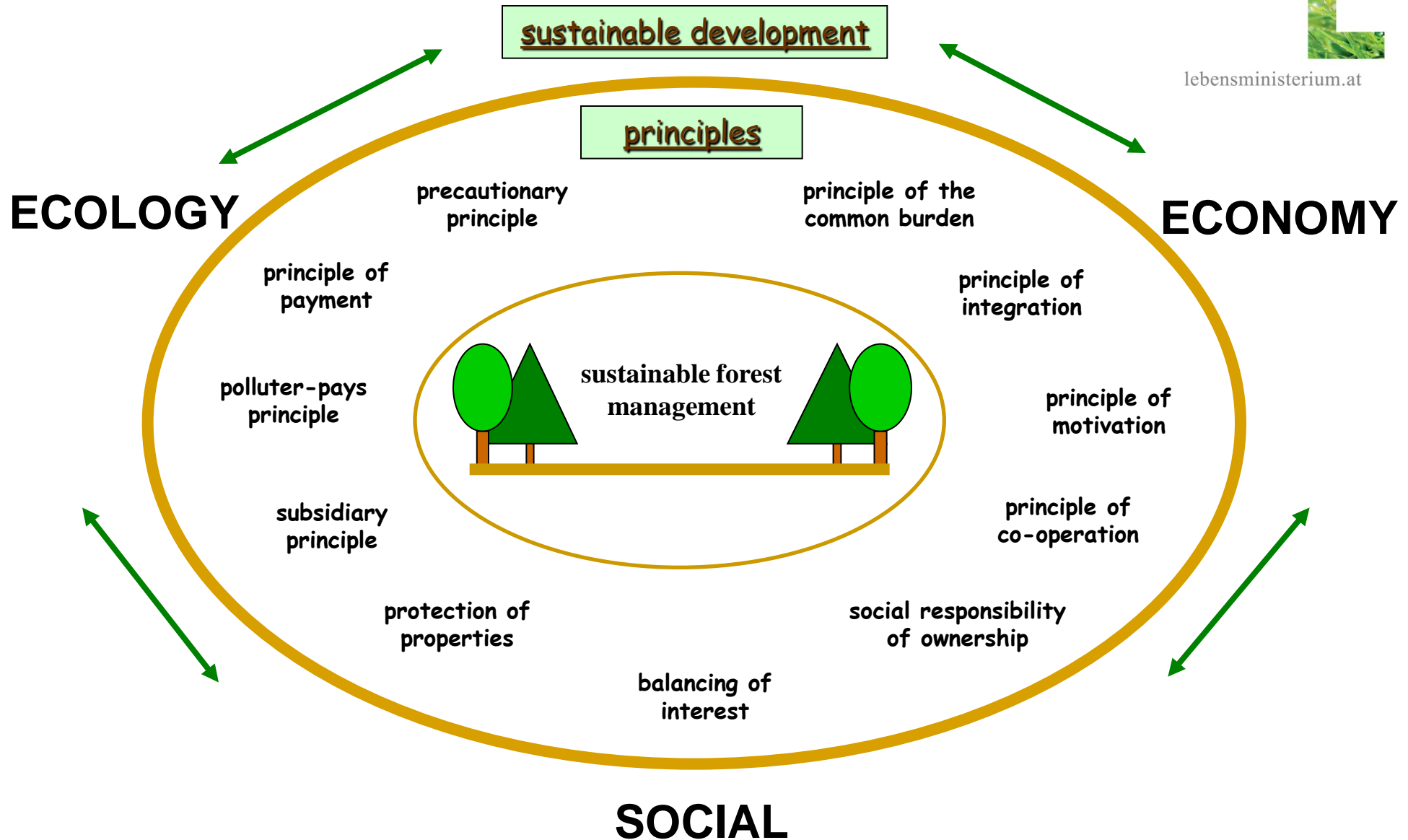
Products of Austrian forests



„Ring Model“



lebensministerium.at



forest ecosystem services



lebensministerium.at



Biological diversity in Austrian forests



lebensministerium.at



New future

for

Forest - Culture

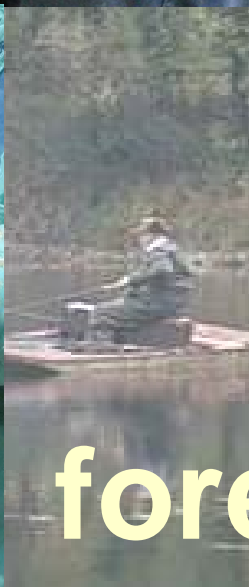


lebensministerium.at





**non-wood
products**



forest production

Protective functions of Austrian forests



lebensministerium.at

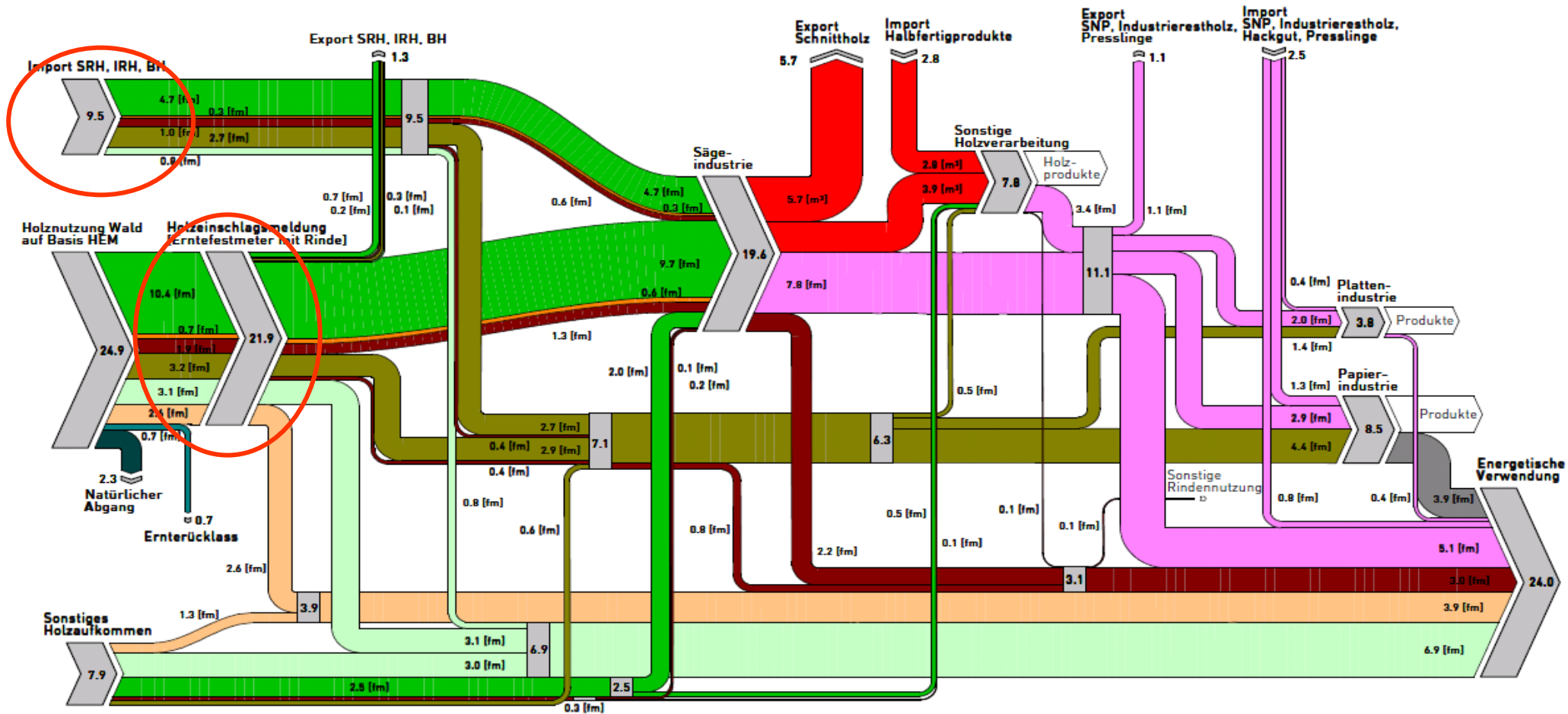




wood
products



Wood flow in Austria



AUSGABE: Juli 2013

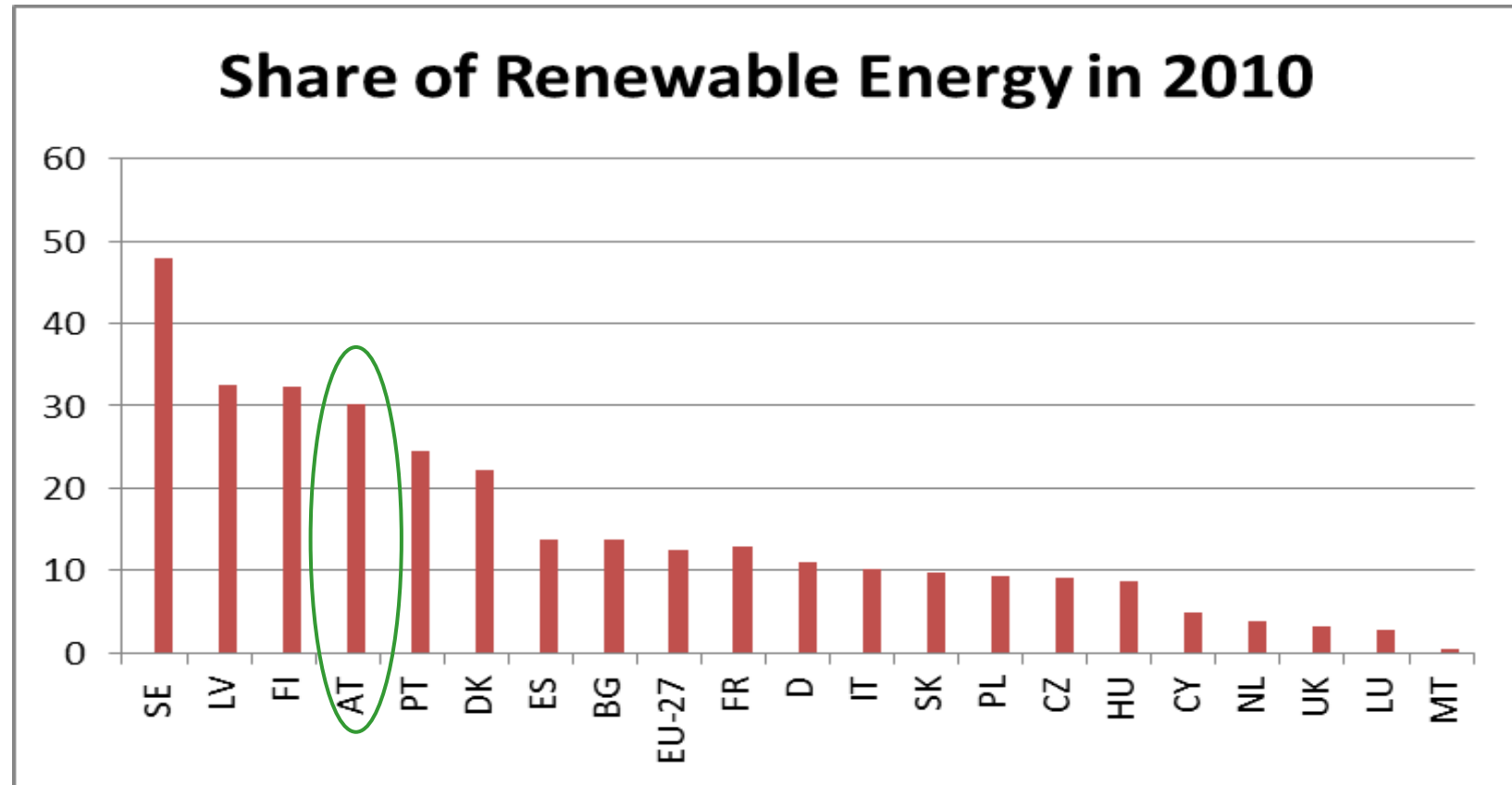
Bezugsjahr: 2011

Quelle: LK Österreich & AEA

Starting situation



lebensministerium.at



- In European comparison, Austria's share of renewable energy is already very high (2010: 30,1 percent)

Measures



lebensministerium.at

Numerous measures to mobilise biomass are offered in the programme „Rural Development 07–13“

- One-time purchasing of machines and equipment
- Forest roads (building new roads, reconstruction)
- Improvements in logistics chain forests – wood
- Silviculture
- Forest-related plans for enterprises
- Training and further training, qualification



Numerous measures to mobilise biomass are offered in the programme „Rural Development 07–13“



lebensministerium.at

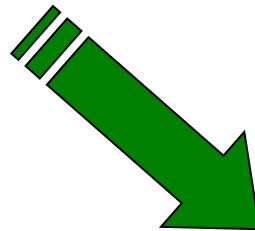
- Information, innovation, marketing and provision of services
- Provision of biomass
- Establishment of and participation in organised wood market systems
- Regional specialised feasibility studies or structural concepts
- Community cooperations of forest owners unions with third parties
- Cooperations across structural borders

Per year approx. 20 million euro are available for this purpose



since 2003

www.walddialog.at



since 2005



THE AUSTRIAN FOREST PROGRAMME



Goals of the National Forest Programme in Austria



lebensministerium.at

- **Strengthen the sector**
- **Balance conflicting interests**
- **Raise awareness about forests and forestry**
- **Keep leadership in forest matters**
- **Gain support for forest measures**
- **Create new partnerships and cooperations**
- **Fulfill international commitments**

➤ [Forest Policy Dialogue](#)





Objectives of the Austrian Forest Dialogue

- **Highlight importance of forests and forestry for society**
- **Identify needs and wishes of interest groups**
- **Develop strategies for long-term economic, environmental and societal sustainability**
- **Coordinate with other sectors**
- **Give political guidance**
- **Commit to act in key areas of concern**

⇒ **Austrian Forest Programme**

Principles of the Austrian Forest Dialogue



lebensministerium.at

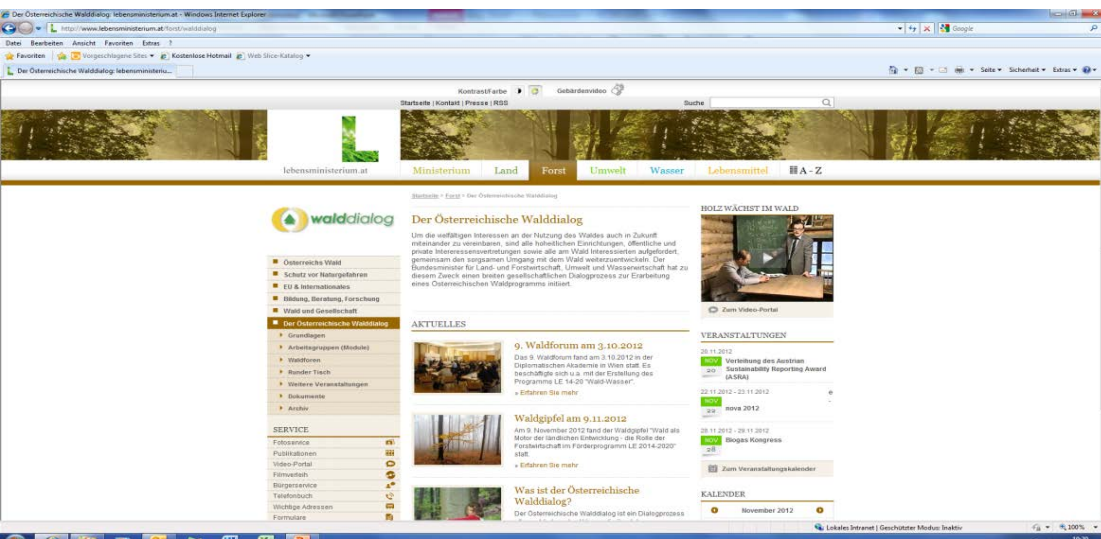
- Active participation of all relevant groups
- Holistic, inter-sectoral and interdisciplinary approach
- Long-term and iterative process
- Complementarity to existing instruments
- Consistency with international agreements
- Openness
- Commitment
- Transparency



⇒ „Rules and Principles“



Participation



www.walddialog.at

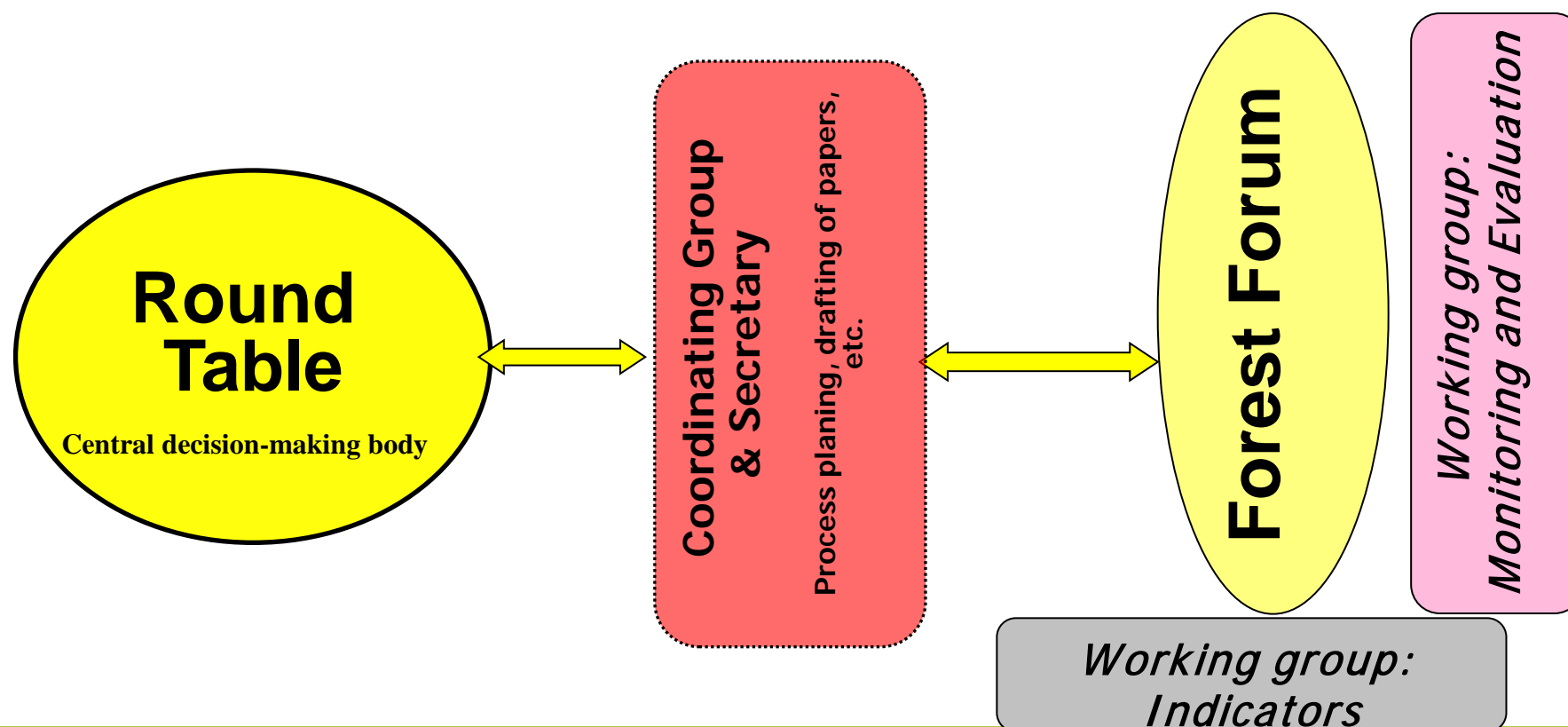
> 90 Institutions and Organisations

- Political parties
- Environmental NGO's
- Governmental bodies, administration
- Church, Youth, Science
- Forestry and forest industry
- Representations of interest (business, labour, social welfare, communities)
- etc

Structure of the Austrian Forest Dialogue

**Ministry of Agriculture, Forestry, Environment
and Water Management**

Responsibility for process, Process management, Interface function,



Broad participation of the public

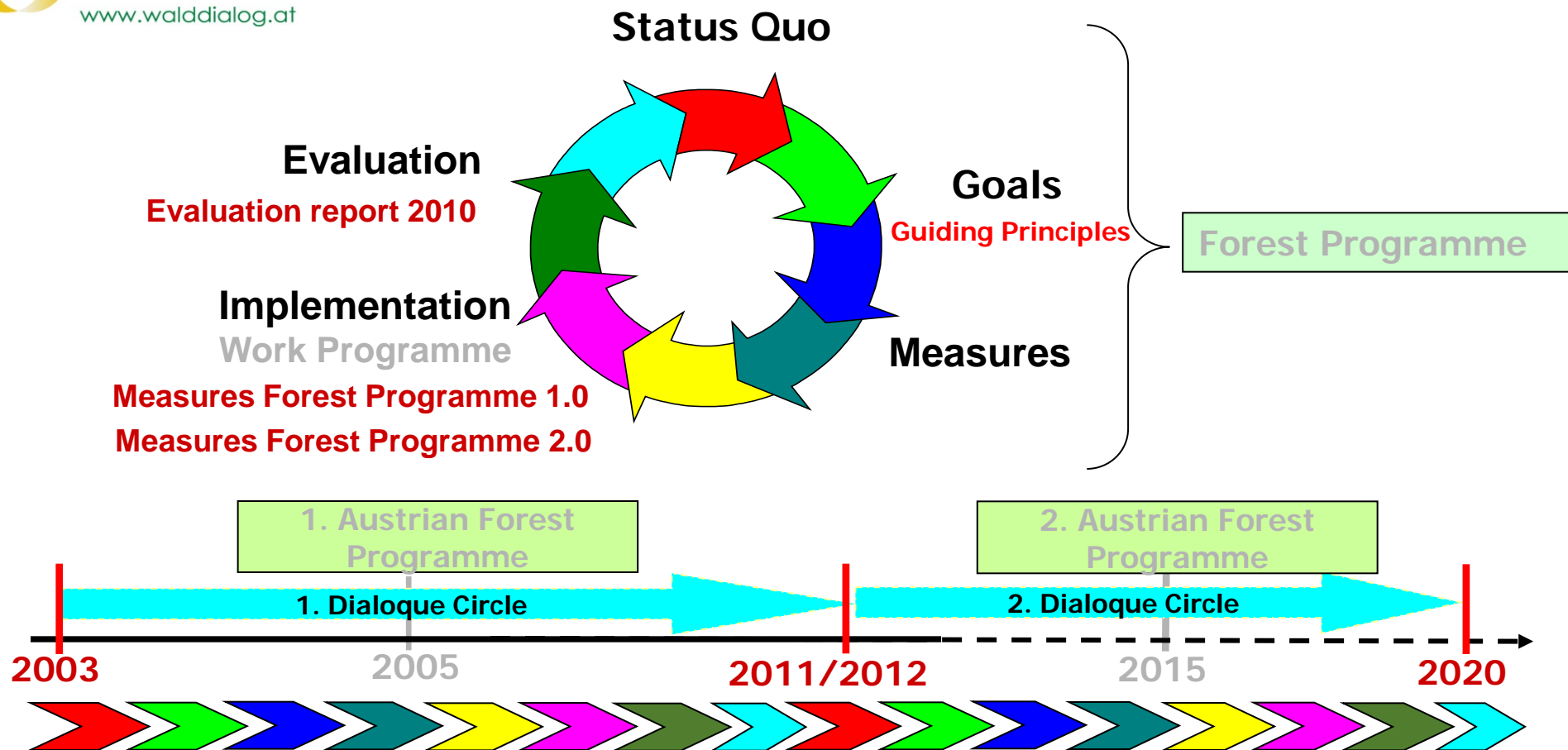
E-Mail, Homepage, Social Media, News Letter, Media etc.

Phases and Cycles of the Austrian Forest Dialogue

(iterative Process)



lebensministerium.at



The Austrian Forest Programme

The Austrian Forest Programm



Status Quo, Trends
and Challenges for
7 Thematic Areas



28 Principles
52 Goals



66 Sets of Measures



Annex: 70 Indicators

ÖSTERREICHISCHES WALDPROGRAMM



Contribution of Austrian forests to climate protection



lebensministerium.at

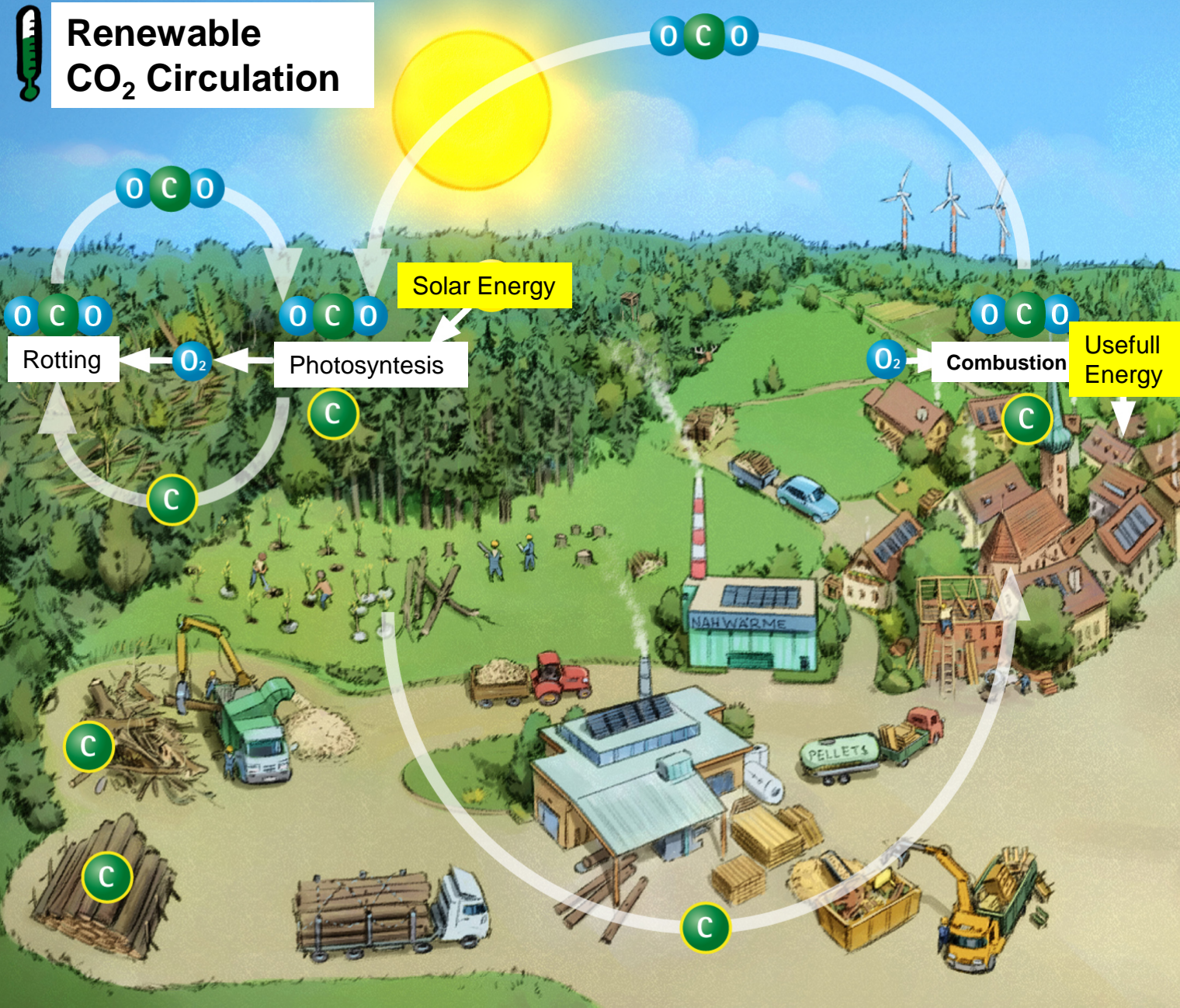


Foto: dpa

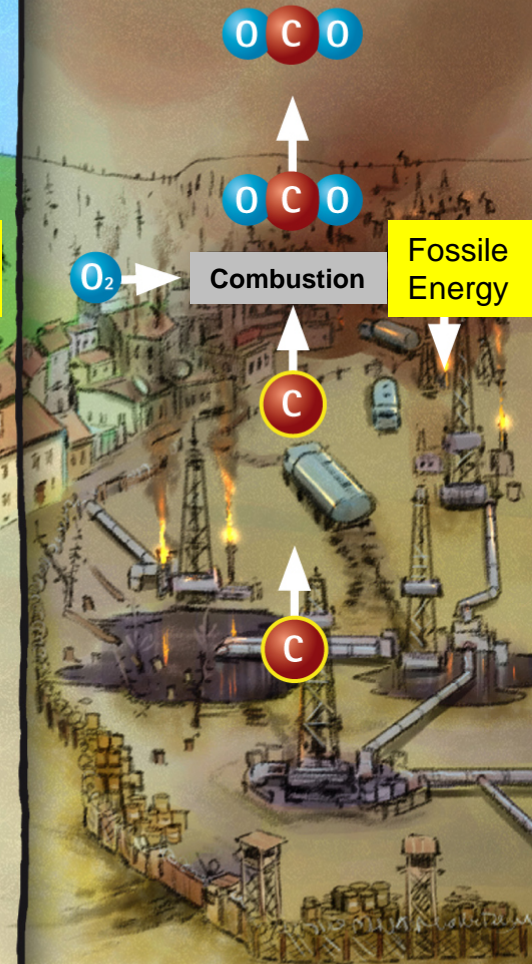




Renewable CO₂ Circulation

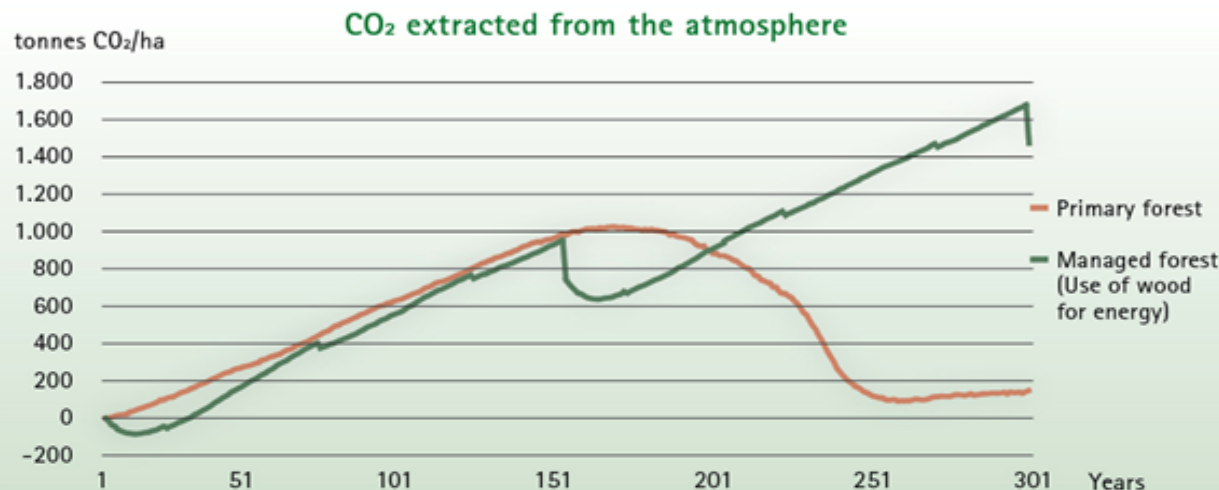


Fossile One-way



Carbon balance of forests

Substitution effects through energetic use of wood



Tab.2: Comparison of the CO₂ effects of a primary forest and a managed forest on the atmosphere over a period of 300 years (in tonnes)

| | Primary forest | Managed forest |
|------------------------------|----------------|----------------|
| CO ₂ emission | 889 | 2,653 |
| CO ₂ storage | -1,035 | -2,650 |
| CO ₂ substitution | 0 | -1,607 |
| CO ₂ sink levels | -146 | -1,603 |

Source: Boku

Consequences for large forested area – a simple example:

- **300 hectares of primary forest** with equal age class distribution (1ha one year old, 1ha two years old,... 1ha 300years old) has in total across all stocks no impact on the amount of CO₂ in the atmosphere (CO₂ neutral). The C uptake and C release due to decomposition (here expressed as CO₂ equivalent) are similar, no substitution effects are evident). 146 t CO₂ = 0,5 t CO₂/ha per year \approx **+/- 0 t CO₂/ha per year**
- **300 ha managed forest** with an equal age class distribution (1/2 rotation period resulting in 2 ha for each age class) exhibits positive substitution effects (replacing fossil C). In this example, the total C sink expressed as CO₂ capacity (green line) is about **1.603 t CO₂ or 5,34 t CO₂/ha per year**. The stored C is harvested and will be released through energetic use substituting fossil C. In primary forests the stored C or CO₂ is released by decomposition processes (see read line).

Source: Hasenauer, own calculations, substitution effects through the use of beech firewood instead of heating oil, substitution effects through the use of wood as a material and intermediate carbon-storage effects in wood products are not depicted. Different CO₂ emissions of fuels are considered. The conversion from C in CO₂ follows the ratio 12:44.

39
07

> CO₂-Effekte der Schweizer Wald- und Holzwirtschaft

Szenarien zukünftiger Beiträge zum Klimaschutz



Schweizerische Eidgenossenschaft
Confédération suisse
Confederazione Svizzera
Confederaziun svizra

Bundesamt für Umwelt BAFU



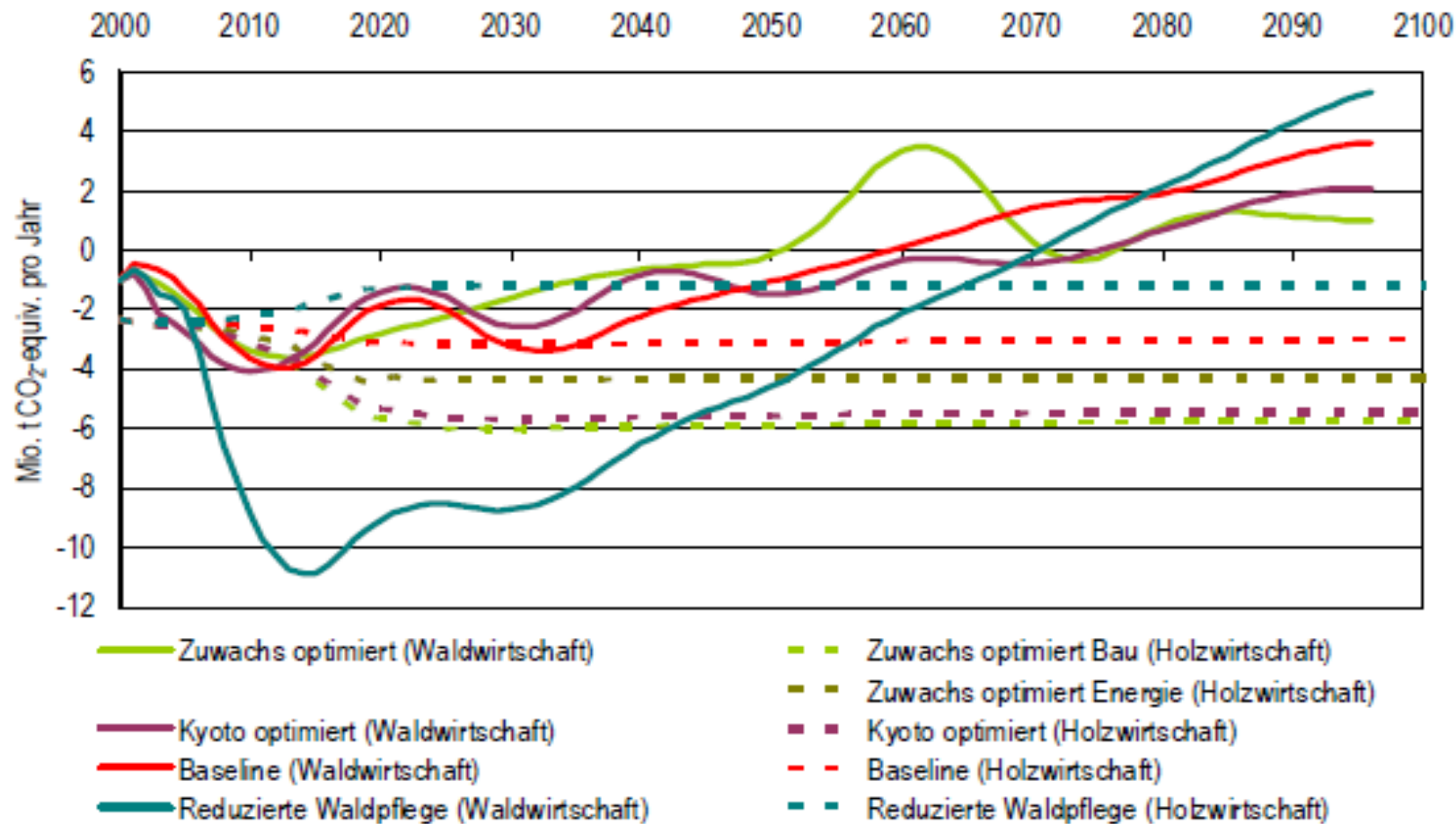
lebensministerium.at

Ongoing Calculation of a CO₂-
balance for the Austrian forest &
wood chain

Comparison of total annual CO₂ effects in forests and Civilisation Circulation in Switzerland



ensministerium.at



„Declaration of Raiding“ concerning large scale nature conservation and SFM



lebensministerium.at



2012

Background and Position



lebensministerium.at

- **unilateral demands for wilderness concepts and other large-scaled nature conservation areas are increasing on European level and in member states**
- **This is justified in very sparsely or unpopulated areas in other continents but not in the sustainable managed countryside in Europe!**
- **climate change, the increased use of wood for the best possible replacement of CO₂-intensive materials such as cement and steel, has a prominent role in the future**

Background and Position



lebensministerium.at

The whole forest based sector in Austria therefore demands, that:

- principles of multifunctional forest management must be fully accepted and the existing property rights must be fully respected
- the successful multifunctional forest management and the performance of the wood value chain in Austria should not only be kept up, but rather strengthened
- the impact of new wilderness concepts concerning all needs of society is analysed and evaluated in a comprehensive way

Forst – Holz – Papier (FHP)



lebensministerium.at



- incorporated autumn 2005
- Contractual partners
 - Austrian chamber of agriculture
 - Waldverband Österreich
 - Land&Forst Betriebe Österreich
 - Austrian Wood Industry
 - Austrian Paper Industry
- offers approx. 300,000 people in Austria an income
- 147.000 family forest business
- Production value app. 10 Mrd. Euro

Content of FHP

- close collaboration between contractual partner
- achieving maximum worth in society and politics
- creation of a community of interests
- efforts for common performance
- partner keep autonomy



lebensministerium.at



Targets

- increase forest harvesting in Austria
- advancement of wood supply of industry
 - assure distribution
- increase the use of wood in every field of application

„The Charta of Mariazell“ concerning forests and game-impact



lebensministerium.at



Background and Goals



lebensministerium.at

- Results of various surveys show partly significant impact of the game on the forests and especially its natural regeneration.

Representatives of landowners and hunting society agreed, that:

- The regeneration of the typical tree species occurring at a site should generally be possible in accordance to the natural potential.
- The influence on forests by game should be designed so that protective measures are not the rule but the exception.
- Further deterioration of wildlife habitats and other impairments of the game and its way of life by third parties should be avoided.
- The regulation of hoofed game populations is an urgent task for the near future.

Landowners and huntsmen are equally called to put appropriate measures at all levels as part of a result-binding dialogue in order to achieve these goals. For this purpose it was agreed, that several working groups with the subjects “awareness raising, information and motivation”, “survey-results and solution strategies” and “hunting laws and their realization” develop concrete measures for actions on local and regional level.

PEFC – Credibility

- Develops national forest management certification standards and schemes, using multi-stakeholder processes for the protection of forests, which have been signed up to by 37 nations in Europe and other inter-governmental processes for sustainable forest management around the world.
- Uses internationally recognised accreditation and certification processes to ensure independence of control, standard setting and delivery of sustainable forest management.
- Is supported by over 20 independent certification schemes and their stakeholders, including woodland owners, industry, environmental and social interests amongst others.

How do I get involved?

- If you own or manage woodlands, get in touch with your national PEFC and ask how your forest management can be certified.
- If you are a wood-processing enterprise, trader or retailer, you

PEFC – Accountability

- Regular independent certified controls from the tree in the forest to the final product reassure the customer that the wood-based products can be traced back to sustainably managed forests.

PEFC – Adaptability

- Facilitates active involvement of all forests and enterprises regardless of size. This includes family-owned forests and also small to medium sized forest enterprises as well as multinational corporations.
- Accommodates and incorporates the global diversity of forest types, cultural heritage, ownership structures and management objectives.

can get your wood flows certified through PEFC (for details, contact the national PEFC).

- If you are a consumer, ask for products with a PEFC logo or specify to your supplier that you want PEFC-certified material.

For more information, please visit our web pages to find out the local PEFC contact in your country: www.pefc.org

The PEFC Council

Registered as an
asbl in Luxembourg
No. 1999-61-02192

17 Rue des Girondins
L-1626 Luxembourg
Tel: +352 26 25 90 59
Fax: +352 26 25 92 58

E-mail: pefc@pt.lu www.pefc.org

Designed and produced by Wyatt International Limited, Birmingham, Printed in England. Photography courtesy of BIOSA, FFIF, UPM-Kymmene Corporation



promoting sustainable
forest management

What does
it mean
to you?

Forest certification

The way to prove that forests are managed in a sustainable way

- Do you care about forests?
- Do you want to see forests managed in an environmentally appropriate, socially beneficial and economically viable way?
- Do you want to support a system giving proof of such sustainable management?
- Do you want to buy and promote wood based products from certified forests?

If your answer is YES, then PEFC is for you.

Sustainable forest management is based on environmentally appropriate, socially beneficial and economically viable management of forests for present and future generations. The PEFC Council, an independent, non-profit, non-governmental organisation, promotes the independent certification of forests managed in this way.

PEFC, as the world's largest forest certification system, provides an assurance mechanism for both enterprises and woodland owners to be able to demonstrate to consumers that wood used in their products comes from sustainably managed forests.

This also makes PEFC certification a useful tool in combating illegal logging.

PEFC is a framework for the mutual recognition of national or regional forest certification schemes which have been developed locally to meet internationally recognised requirements for sustainable forest management. Its members are national or regional, independent third party forest certification schemes, mainly based on inter-governmental processes for sustainable forest management around the world such as the Ministerial Conference on the Protection of Forests in Europe.

PEFC has become the world's largest forest certification umbrella organisation covering over 20 national independent schemes from all over the world, delivering hundreds of millions of tonnes of wood to the market place from tens of millions of hectares of certified forests. PEFC has strong grass roots support from many stakeholders including the forestry sector, governments, trade associations, trade unions and non-governmental organisations.



PEFC provides a logo for wood-based products, allowing customers and the general public to make a positive choice for sustainable forest management.



PEFC delivers:

- Sustainability
- Credibility
- Accountability
- Adaptability

PEFC – Sustainability

- Benefits the biodiversity of nature and the environment
- Promotes the economically viable, environmentally appropriate and socially beneficial management of forests
- Provides independent certified proof of the sustainable management of forests
- Provides continuous supplies of wood products from millions of hectares of sustainably managed certified sources

A photograph of a dirt path winding through a dense forest. Sunlight filters through the canopy, creating dappled light on the path and surrounding greenery. Tall, slender trees line the path, and the undergrowth is thick with various plants and shrubs.

Thank you for your attention!

Graphische Gestaltung: AR Fö. H. Kiessling, BMLFUW Abt. IV 4

Fotos: dpa; BMLFUW; Dr. SCHIMA; STARSICH; ZIEHAUS; PRO HOLZ; Archiv KIESSLING; WLK; BIOSA; BFW;
DI SINGER; DI ZIEGNER; BFW/Frank; BMLFUW / Kern; BMLFUW / Zeggli; KELLER; LFZ / Buchgraber;